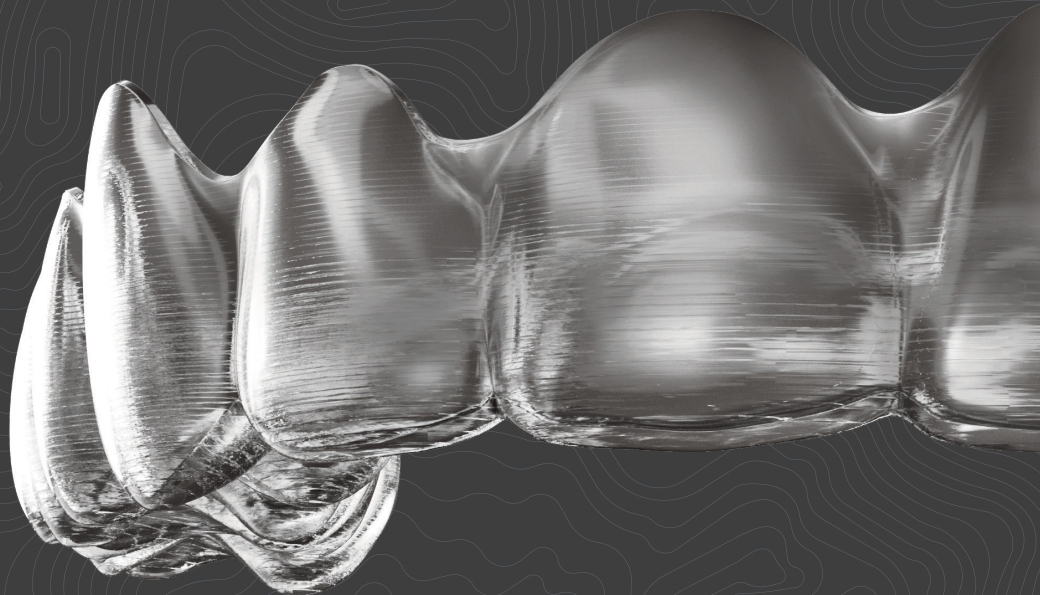


invisalign® go



Discover Invisalign® Go.

Grow your practice with a streamlined teeth straightening digital solution developed just for general dentists.

Profitability.

- 01 Practice growth**
Offer more treatment options to existing and new patients

- 02 Helps drive case acceptance**
Have patients say yes without leaving the chair

- 03 Minimise doctor chair time**
Higher efficiency compared to other general dental procedures

- 04 Team empowerment**
Give your team the tools to talk about tooth movement

Predictability.

- 01 Increased accuracy**
Unparalleled expertise that comes from treating more than 6 million patients means greater accuracy, reliability and predictability for your patients

- 02 Digitalised workflow**
More control over accuracy and efficiency of tooth movement

- 03 Complete visibility**
Visualise and review each stage of the patient treatment plan through ClinCheck® software

Efficiency.

- 01 Patient-focused approach**
Streamlined solution to address the chief concerns of your patients

- 02 Mobile every step of the way**
Everything from image capture to case assessment results, fast and efficient straight to your mobile device

- 03 Integrated chairside experience**
Show your patient what is possible within just minutes

- 04 Digitally aided referral process**
Easy transfer of patient photos to an Invisalign specialist for cases identified as requiring more complex tooth movement

Relevance.

- 01 Comprehensive dentistry**
Optimise the clinical condition through minimally invasive dentistry and space management before restorative procedures

- 02 Made for your everyday dentistry**
Support the work you do every day for your patients

> **Invisalign Go treatment includes:**

- Treatment designed for a range of aesthetic case types
- 20 aligners or fewer
- Treatment of second pre-molar to second pre-molar
- Pre-restorative anterior alignment
- 2 years of additional aligners

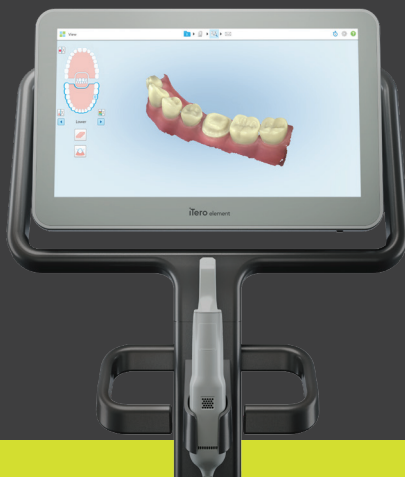
> **Invisalign Go treatment has all the advantages you trust**

- A seamless digital workflow that supports treatment planning and monitoring
- Aligners made from **SmartTrack**[®] material provide patients with more comfort and are easier to insert and remove*
- **SmartForce**[®] features are customised to each tooth to achieve more predictable tooth movements

*SmartTrack[®] material vs. aligners made from off-the-shelf, single-layer 0.030-inch material.

Putting the power of a digital workflow in your hands.

By incorporating Invisalign Go treatment and iTero Element[®] intraoral scanners into your everyday practice, you can give your patients the modern digital experience they expect and the better, brighter smiles they want.



- > Accuracy
- > Efficiency
- > Patient satisfaction

iTero | invisalign[®] go

invisalign® go

Grow your practice with beautiful smiles.

Did you know Invisalign Go treatment helps you offer more to your patients - and attract new ones.

Your patients are asking for better, brighter smiles.

75%

of your patients could benefit from straighter teeth¹.

45%

of prosthodontic procedures could benefit from pre-treatment tooth alignment².

invisalign.com.au

invisalign.co.nz

1. Brunelle, et al. Journal of Dental Research. February 1996; and NHANES data.

2. Data on File at Align Technology as of Sept. 20, 2017. Based on survey data of current Dental Practitioners in the USA, doctors (n=251) were asked "What percent of the patient cases for prosthodontic procedures (i.e., veneers, implants, bridges, partials) would have benefited from a better initial position of the teeth?" (n=251). An average of 45% was developed from the doctor's responses.

Invisalign®, ClinCheck®, SmartTrack®, and iTero® among others, are trademarks and/or service marks of Align Technology, Inc. or one of its subsidiaries or affiliated companies and may be registered in the U.S. and/or other countries.

© 2019 Align Technology. All Rights Reserved.